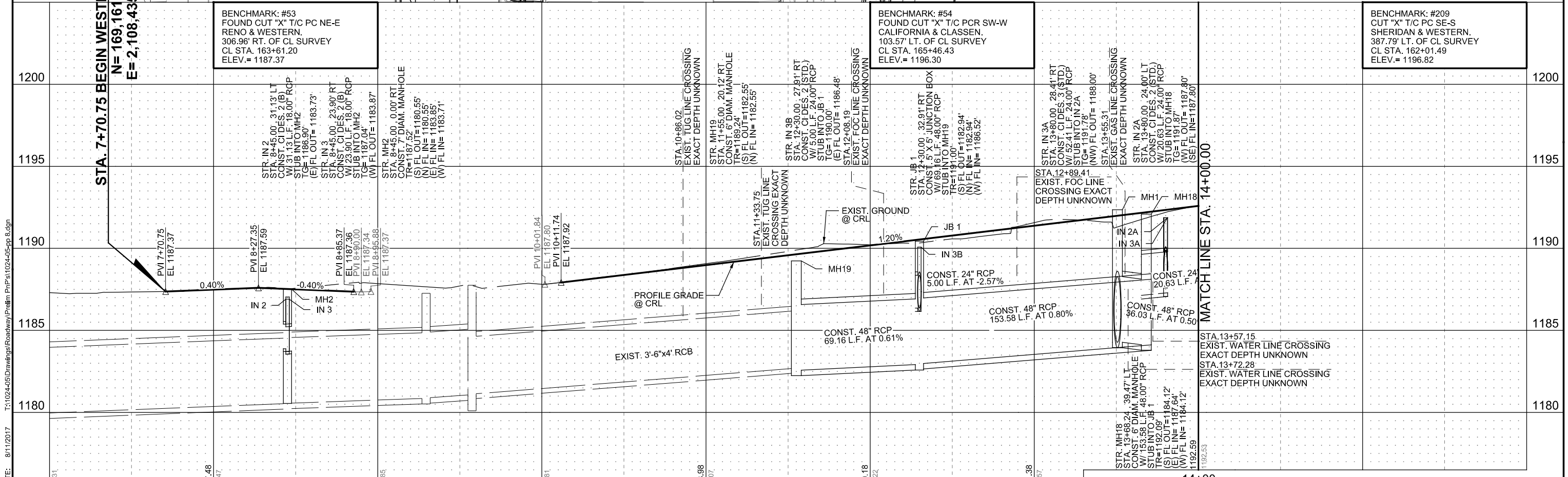


CURVE # 1
 P.I. Sta = 13+05.61
 Easting = 2108435.54
 Northing = 169696.57
 Delta R = 63°12'56.36"
 D = 28°56'14.14"
 T = 121.85'
 L = 218.46'
 R = 198.00'
 E = 34.49'
 V = 25 mph



BENCHMARK: #53
 FOUND CUT "X" T/C PC NE-E
 RENO & WESTERN.
 306.96' RT. OF CL SURVEY
 CL STA. 163+61.20
 ELEV. = 1187.37

BENCHMARK: #54
 FOUND CUT "X" T/C PCR SW-W
 CALIFORNIA & CLASSEN.
 103.57' LT. OF CL SURVEY
 CL STA. 165+46.43
 ELEV. = 1196.30

BENCHMARK: #209
 CUT "X" T/C PC SE-S
 SHERIDAN & WESTERN.
 387.79' LT. OF CL SURVEY
 CL STA. 162+01.49
 ELEV. = 1196.82